

## COBALT CACHERaQ 2

SIMPLE, SCALABLE WEB-CACHING SERVER APPLIANCE—AT A BREAKTHROUGH PRICE

If you struggle with Internet and intranet traffic, Cobalt Networks, Inc. provides an amazing solution. The Cobalt CacheRaQ™ 2. Rather than suffering the disruption and cost of adding bandwidth, Cobalt's caching products give you fast and affordable alternatives designed to optimize existing bandwidth, minimize overloaded wide area network (WAN) connections, and dramatically speed up web access.

The Cobalt CacheRaQ 2 delivers turnkey caching solutions for business, enterprise workgroups and ISPs. Web caching improves responsiveness at extremely low costs by retaining copies of recently requested web documents locally. As a result, you save network bandwidth and speed up web browsing. Bandwidth traffic savings can be as high as 50%, delaying or eliminating the need for costly, time-consuming upgrades.

### Benefits:



#### Reduced network bandwidth requirements

WAN connections—ISDN, Frame Relay and T1—are slower than local network connections, creating bottlenecks for Internet access. Caching eliminates the redundant traffic traveling over WAN links, significantly reducing bandwidth consumption, by 30-50% in most cases.

#### Faster web response

After a web object is requested for the first time, subsequent requests for the same web object are fulfilled from the local cache server, which responds fully five to ten times faster than the remote web server.

#### Breakthrough pricing

Until now, web-caching solutions have been very expensive to deploy and operate, ranging from \$10,000 to \$100,000. Now, Cobalt's caching technology makes robust web caching available for under \$2,000.

#### Room to grow

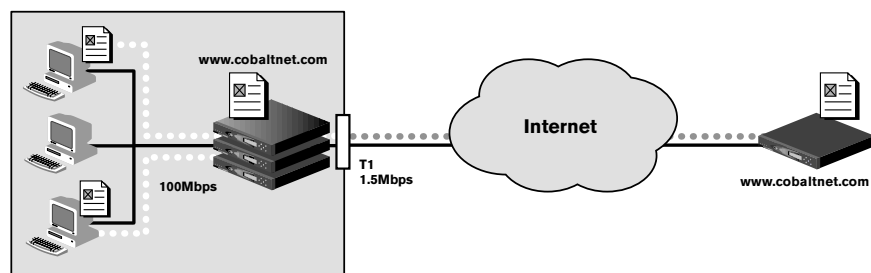
A single CacheRaQ 2 server can handle one T1 line. As your web traffic grows, Cobalt's exclusive InstaCache™ clustering technology allows you to add cache servers when and where you need them. In addition, Cobalt caching solutions interoperate with leading Level-4 switching products for further scaling. Cobalt can advise you on specific configurations for your network.

#### Simple installation and transparent operation

The Cobalt CacheRaQ 2 is pre-configured with all the hardware and software you need for web caching. Installation takes just minutes. Setup and administration are browser-based for easy operation.

As a transparent cache, all caching and retrieval occurs automatically and requires no browser reconfiguration. The only noticeable difference is improved performance.

*The first request for a web page is fulfilled via the wide area network. Subsequent requests are instantly retrieved from the Cobalt CacheRaQ 2 server. This conserves wide area network bandwidth.*



# COBALT CACHING SOLUTIONS

Caching Features	<p>Caches HTTP and FTP traffic (HTML pages, images, MPEG files, etc.)            Configurable for both transparent or traditional proxy caching mode            Supports SSL tunneling and cookies            Supports Cobalt InstaCache™ Cluster™ technology for scalability            Includes Internet Caching Protocol (ICP) support            Creates log files compatible with Harvest, Squid and CERN Proxy standards            Filtering/URL blocking, automatic usage email reports</p>	
Performance	<p>Supports a single T1 or E1 line            Additional scalability through Cobalt InstaCache Clustering            Supports Level-4 switches for fail-over and scalability            Stores metadata and hot objects in main memory for fast cache lookups</p>	
System Management	<p>Browser-based management interface            Online ActiveAssist™ real-time help            Advanced management using Telnet            Performance and usage reporting and logging            SNMP agent            ActiveMonitor maintenance daemons with e-mail alerts            15-minute installation via LCD panel and web browser</p>	
Cache Configuration	<p>User-definable content refresh interval            User-definable maximum size for cache objects            Ability to disable caching of specified HTTP servers</p>	
Other Features	<p>Automatic system restart after power outage and restore            Browser-based software upgrade</p>	
Hardware	<p>4.3GB - 12.7GB disk cache capacity (approximately 300,000 - 1,000,000 cached objects)            64MB - 256MB DRAM            LCD panel for easy set-up and administration            Dual Ethernet interface (10/100Mbps autonegotiation, full duplex) and serial console interface</p>	
Physical	<p>Dimensions: 17.00 x 12.50 x 1.75 inches            (43.2 x 31.8 x 4.5 cm) (fits standard 19" equipment rack; single rack unit height)            Weight: 9 lbs 3 oz (4.2 kg)            Power requirements:                Input rating 100-240V, 50/60Hz                Maximum power consumption: 35 watts            Operating environment:                32° to 108° F (0° to 40° C) 10% to 90% humidity (non-condensing)            Non-operating environment:                14° to 122°F (-10° to 50°) 5% to 93% humidity (non-condensing)            LEDs: Power, Transmit/Receive, Link, Collision, 100 Mbit Operation, Disk Activity, Web Activity,                OK to Power Off</p>	
Regulatory Approvals	<p>FCC Class A/B, CE, TUV, C/UL, VCCI-B</p>	
Product Configuration	<p>Marketing Part Number</p> <p>R28 684 NCU            R28 C43 NCU            R28 GB7 NCU</p>	<p>Product Configuration</p> <p>Cobalt CacheRaQ 2 with 64MB DRAM            Cobalt CacheRaQ 2 with 128MB DRAM            Cobalt CacheRaQ 2 with 256MB DRAM</p>

## About Cobalt Networks

Cobalt Networks, Inc. is a leading developer of server appliances that extend the reach of the Internet by setting new standards for value, integration and ease of use. Cobalt's award-winning product line – the Cobalt Qube, Cobalt Cache, Cobalt RaQ and Cobalt NASRaQ – are widely deployed as Internet and web-hosting server appliances in businesses, educational institutions and Internet Service Providers (ISPs). Cobalt's solutions are delivered through a global network of distributors, value-added resellers and ISPs. Founded in 1996, Cobalt Networks Inc. (<http://www.cobalt.com>) is headquartered in the heart of Silicon Valley in Mountain View, California, USA, with international offices in Japan, United Kingdom, France, Netherlands and Germany.

For the name of a distributor near you, contact:

Cobalt Networks, Inc.  
 555 Ellis Street  
 Mountain View, CA 94043  
 phone: 888.70.COBBALT  
 phone: 1 650 623 2500  
 fax: 1 650 623 2501  
 web: [www.cobalt.com](http://www.cobalt.com)  
 email: [info@cobalt.com](mailto:info@cobalt.com)

Cobalt Networks, Inc.  
 Schipholweg 123  
 2316 XC Leiden  
 The Netherlands  
 phone: +31 (71) 565 7000  
 fax: +31 (71) 565 7010  
 web: [www.cobalt.com](http://www.cobalt.com)  
 email: [info-emea@cobalt.com](mailto:info-emea@cobalt.com)



©2000 Cobalt Networks, Inc. Cobalt Networks, Cobalt Qube, Cobalt RaQ, Cobalt CacheRaQ and Cobalt NASRaQ are trademarks of Cobalt Networks, Inc. Other product names are trademarks or registered trademarks of their respective owners. Specifications are subject to change.