

# McAfee GroupShield for Exchange

Microsoft Exchange 5.5 and Exchange 2000

## Faster and More Comprehensive Defense for your Microsoft Exchange Environment

On March 26th, 1999 the world shook when a nasty little macro virus called Melissa spread to thousands of email servers world wide in a matter of hours. The advent of Melissa heralded a new approach by virus authors in the way they would use viruses to affect the business community. One year later networks and email servers were once again brought to their knees by the "I Love You" virus, marking what seems to be a permanent trend in virus distribution and one that forces IT departments to find ways of effectively dealing with email borne virus outbreaks. The only way to stop many of today's Internet-borne viruses is through extremely high levels of compliance with a strictly defined virus security policy. Email protection is a key component of the overall policy solution and it is particularly important in enforcing your policy. Ideally, scanning for viruses should be performed at the email server where a virus can be stopped before entry into the network, minimizing any damage. This is why McAfee created GroupShield for Exchange

Increased communications and improved productivity with email, public folders and the global Internet community are what groupware solutions such as Microsoft Exchange provide. Millions of people worldwide now rely on Microsoft Exchange as their primary means to communicate more productively and efficiently as a group. Unfortunately, the very thing that makes groupware environments like Microsoft Exchange so valuable also makes them prone to spreading viruses and malicious code rapidly through an entire workgroup or organization. The recent I Love You outbreak is proof that if one user inadvertently distributes an infected document, the effects can be devastating, time consuming and costly.

McAfee GroupShield for Exchange includes Outbreak Manager, giving you pro-active virus defense. Outbreak Manager is designed to look for suspicious 'outbreak' like email behavioral patterns and can halt potential outbreaks before they take hold of your network.



*Configuring real-time email protection, ensuring all inbound and outbound emails are virus free.*

*"McAfee offers the best virus protection in the industry, actively and aggressively shielding our enterprise from devastating virus attacks, like the IloveYou virus earlier this year. While the IloveYou virus forced many of our competitors to shut down, we remained completely unaffected and were able to carry on business as usual with the McAfee solution in place."*

*Joanie Mann, Vice President of Operations, InsynQ*



## Key Features

- Microsoft VirusScan API Integration  
Allows GroupShield to directly access MS-Exchange providing comprehensive, high performance scanning.
- Outbreak Manager  
McAfee GroupShield for Exchange includes Outbreak Manager, giving you pro-active virus defense. Outbreak Manager is designed to look for suspicious 'outbreak' like email behavioral patterns and can contain potential outbreaks before they take hold of your network.
- Remote Manageability  
GroupShield is integrated with MMC (Microsoft Management Console) giving Exchange administrators the ability to manage their Exchange servers and anti-virus configuration from the same console and environment.
- Cluster Server Support  
Supports both Active-Active, Windows 2000, and NT 4.0 clustering
- Logging  
Provides you with superior visibility into your perimeter virus security.
- Reporting  
Maximum visibility into GroupShield to allow trend analysis on critical information specific to the Exchange environment.
- Alerting  
Allows administrators to receive detailed alerts both on virus and server activity.

# MCAFFEE

A Network Associates Company

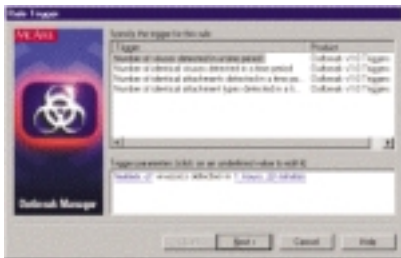
## Microsoft VS-API

GroupShield for Exchange now leverages the Virus Scan API from Microsoft. This API has been designed to provide:

- Greater security whilst scanning
- Superior scanning performance
- Support from Microsoft as the preferred method for scanning within Exchange.

## Outbreak Manager

Outbreak Manager is breakthrough anti-virus technology that automatically stops outbreaks before they start. It searches for new attacks by looking for activities typical of new virus outbreaks. Outbreak Manager can be instructed to operate in either automated or manual modes. In manual mode when a virus outbreak is detected, Outbreak Manager will inform the email administrator, who can then determine what action is required to contain the outbreak. Alternatively Outbreak Manager can run in automatic mode, in which case if an outbreak is detected, it will perform a number of pre-determined tasks to secure the email environment against possible infection, requiring no manual intervention.



*Outbreak Manager's behavioral triggers: to enable tracking of suspicious email behavioral patterns*

## Incremental On-Demand Scanning

Enables 'one-time' scanning to reduce server load. Once a file has been scanned and found not to be virus infected, it will not be scanned again unless the file has been changed.

## Virus Detection and Cleaning

Common to all anti-virus products from Network Associates, GroupShield for Exchange includes the McAfee Active Virus Defense scanning engine, regarded as the worlds leading virus detection and cleaning technology. With superiority on every front, the engine stops every type of virus and malicious code threat, including macro viruses, Internet email, Trojan horses, worms and even hostile ActiveX and Java. The McAfee scanning engine is certified by more 3rd party tests than anything else in the industry to deliver comprehensive detection and cleaning. Sporting the McAfee engine, GroupShield for Exchange also enjoys the benefits of ViruLogic. As an advanced heuristic scanning technology, ViruLogic employs both positive and negative heuristics to detect previously undiscovered viruses, with the fewest false alarms, and clean them before they can incur damage. Variant detection capabilities find new mutations of existing dangerous viruses. Only McAfee provides the technology to deal with the speed of today's virus attacks.

## Always State of the Art

GroupShield for Exchange features McAfee AutoUpdate which enables the latest Virus Definition Drivers (.DAT files) to be automatically downloaded via FTP or Network File Share. This automated server-side function ensures you will always be up to date with the latest .DAT files from McAfee.

## System Requirements

Note: The following are minimum system requirements only. Actual requirements will vary depending on the nature of your environment.

### System

- Microsoft Exchange 5.5 SP3+, or Microsoft Exchange 2000 SP1 Server

### Memory

- 64MB (WindowsNT)
- 256MB (Windows 2000)

### Disk Space

- 23MB install
- 500MB Free disk space

### Other Hardware

- Pentium 300

### Other Software

- NT 4.0 SP4+ or Windows 2000 Server



For more information on products, worldwide services, and support, contact your authorized McAfee sales representative or visit us at:

3965 Freedom Circle  
Santa Clara, CA 95054-1203  
Tel (888) 847-8766  
Fax (888) 203-9258

[www.mcafeeb2b.com](http://www.mcafeeb2b.com)



A Network Associates Company