

McAfee WebShield e500 Appliance

Comprehensive Perimeter Protection

While other companies require you to buy multiple products, McAfee provides you with affordable comprehensive integrated perimeter protection for your network in a single, easy-to-use product.

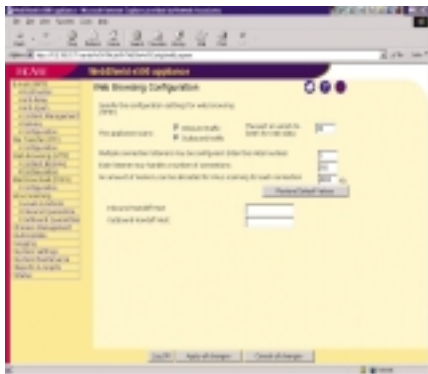
Gateway Security Made Simple

Viruses such as "I Love You" and "Melissa" propagated via email at an unprecedented rate, creating a trend in virus distribution that forced IT departments to find cost effective ways of dealing with email borne viruses and outbreaks. The only way to stop many of today's costly Internet-borne viruses is through extremely high levels of compliance with a strictly defined anti-virus security policy. Internet Gateway protection is a key component of the overall anti-virus policy solution. Scanning for viruses should be performed at the Internet Gateway where a virus can be stopped before entry into the network, minimizing any damage to business critical systems. The new McAfee WebShield e500 Appliance is an integrated solution, combining award-winning anti-virus software with high performance hardware, delivering virus protection and cleaning in a configure-and-forget system that quickly resolves your major virus security worries.

Configure and Forget

As an appliance, the McAfee WebShield e500 Appliance represents an excellent solution for companies that wish to protect their networks from external virus threats, but want to avoid the time and expense of identifying, purchasing and integrating hardware, operating system and software components from separate vendors. With the WebShield e500, McAfee is able to deliver a one-stop-shop for your company's gateway anti-virus protection.

Multiple Protocol Scanning for higher performance



The McAfee WebShield e500 Appliance scans for viruses on SMTP, HTTP, FTP and is the first anti-virus gateway solution to scan POP3. Installed behind any firewall – the McAfee WebShield e500 Appliance is firewall independent – viruses and malware are scanned, without impacting the performance of your firewall or email servers. Your network and your users are therefore protected when browsing the Web, downloading files or checking their private email boxes.



The McAfee Difference

McAfee, a Network Associates business, is the company that over 70 million customers turn to for trustworthy virus defense. McAfee provides manageable anti-virus solutions to protect e-businesses from virus attacks. McAfee Active Virus Defense is an award-winning multi-tier virus defense that includes VirusScan desktop protection, NetShield for file servers, GroupShield for groupware protection and WebShield for Internet gateway protection. McAfee provides effective tools to manage anti-virus protection, enforce virus security policy, obtain DAT updates and generate reports with Thin Client, ePolicy Orchestrator and Anti-Virus Informant. All McAfee products are backed by a world leading anti-virus research organization, McAfee AVERT (Anti-Virus Emergency Response Team), which protects customers against the increasingly complex and frequent virus attacks that threaten to cripple e-business. For more information, McAfee AVERT can be reached at <http://www.mcafeeb2b.com/avert>.

McAfee is the leader in the anti-virus software market, having more than twice the corporate anti-virus market share than its nearest competitor, according to a 2000 IDC report.



A Network Associates Company

Scalability

Capable of scanning over 100,000 emails per hour, the McAfee WebShield e500 Appliance can easily and efficiently handle even the heaviest loads, thereby providing you rock solid protection at the perimeter of your network.

Content Management

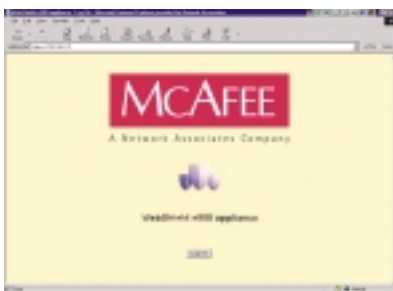
The McAfee WebShield e500 Appliance ensures that you know exactly what is entering and leaving your network. The Content Filtering feature scans the originators and recipients, subject line, message body and file attachment names of all emails, thereby offering you protection against specific email hoaxes, even before virus definitions have been produced. The content filtering also allows you to protect your users from emails containing offensive or defamatory words or phrases, while protecting your organization from the potential legal issues by preventing such emails from being sent out from your organization. In addition, the WebShield e500 Appliance allows you to configure different rules for inbound and outbound email traffic. As added legal protection, the WebShield e500 Appliance allows you to insert standard disclaimers to all outgoing emails. The WebShield e500 Appliance can also help conserve email bandwidth by preventing users from sending or receiving specified types of attachments, emails greater than a specific size or emails with too many, or too large, of attachments.

Spam Detection and Anti-Relay

By supporting the use of spam lists, such as the MAPS Real Time Black-hole List, ORBS and MAPS Dial-up User List (DUL), McAfee WebShield e500 Appliance enables you to block spam email from your organization, saving you valuable network resources and time wasted by users reading spam. It also prevents individuals from using your servers to relay spam email, giving you greater control and security within your network. In addition, specific spam words and phrases can be blocked using the content filtering capabilities.

Remote Manageability

Manageability is key to the success of an anti-virus product. The McAfee WebShield e500 Appliance allows you to perform all management functions remotely, but securely, from a standard Web browser, or through McAfee's exclusive ePolicy Orchestrator. From a single machine, multiple WebShield systems can be administered.



Logging and Alerting

The WebShield e500 Appliance provides superior visibility into your virus security perimeter with detailed, comprehensive, and easy to understand logs, graphs and charts. As well as a customizable logging interface, the WebShield e500 Appliance also has the ability to pass logged information to ePolicy Orchestrator for trend analysis.

Always up-to-date

Virus security products are only as good as their most recent versions. The McAfee WebShield e500 Appliance contains auto update functionality, ensuring you are always up to date with the latest Virus Definition Drivers (DAT files) and scanning engines from McAfee.



Unbeatable Virus Detection and Cleaning

Common to all anti-virus products from McAfee, the McAfee WebShield e500 Appliance includes the award-winning McAfee Active Virus Defense scanning engine, regarded as a world leading virus detection and cleaning technologies. This powerful engine not only stops every type of virus and malicious code threat (including macro viruses, Internet email, trojan horses, and worms), but also stops hostile ActiveX and Java. The McAfee scanning engine is independently certified to deliver comprehensive detection and cleaning—it outperforms a majority of its competitors. Sporting the McAfee engine, the WebShield e500 Appliance also enjoys the benefits of ViruLogic. As an advanced heuristic scanning technology, ViruLogic employs both positive and negative heuristics to detect previously undiscovered viruses, with the fewest false alarms. ViruLogic's variant detection capabilities find mutations of existing detrimental viruses, and cleans them before they cause damage. Recursive decompression scanning digs viruses out of multiply zipped files, while a sophisticated decryption engine component detects advanced encrypted viruses before they can unleash their payloads. McAfee can provide the technology to deal with the speed of today's virus attacks.

For more information on products, worldwide services, and support, contact your authorized McAfee sales representative or visit us at:
3965 Freedom Circle
Santa Clara, CA 95054-1203
Tel (888) 847-8766
Fax (888) 203-9258

www.mcafeeb2b.com



A Network Associates Company