

Sophos Anti-Virus for NetWare

Sophos Anti-Virus (SAV) for Novell NetWare is virus-specific detection and disinfection software which is installed on NetWare servers. It checks server volumes for the presence of viruses, including Macintosh viruses. It also checks all disks and files accessed on the workstation, including Internet downloads, email attachments and groupware. It operates in scheduled, on-access and on-demand modes. Its unique architecture intelligently determines which files need to be virus checked, maximising user transparency and minimising performance overhead. Flexible configuration options mean that SAV can make the most efficient use of workstation and network resources.

How it works

Sophos Anti-Virus for Novell NetWare (SAV for NetWare) has two components:

- **SWEEP** provides on-demand and scheduled virus checking of volumes on NetWare file servers.
- **InterCheck** provides server or workstation based on-access virus checking of workstations connected to the server.

Users choosing not to use InterCheck on the workstations can use SAV's **Real-time** mode to ensure that only virus-free files are written to the server.

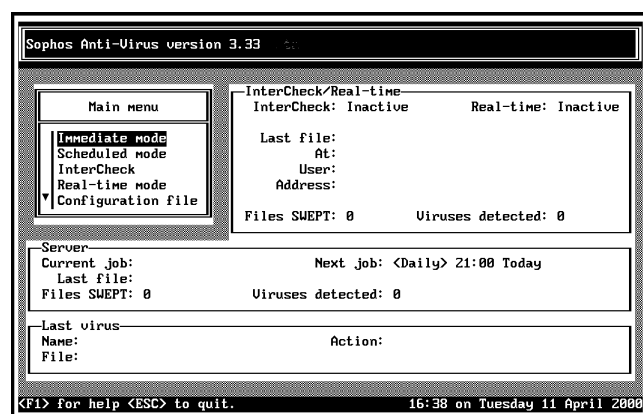
SAV for NetWare provides an automatic virus elimination facility for viruses found on the server, so action is taken as soon as a virus is detected, even if no operator is present.

Infected files are renamed, deleted (reversible), purged (irreversible) or moved. Infected documents can be disinfected.

Viruses found on client workstations can be dealt with using the version of Sophos Anti-Virus specific to their operating system or the version for DOS/Windows 3.1x.

Features

- Is updated twelve times a year, and urgent interim updates can be downloaded from the Sophos website or, on request, be received via fax or email.
- Easily detects polymorphic viruses using Sophos's advanced Virus Description Language (VDL) and a built-in code emulator.
- Detects and disinfects Microsoft Office macro viruses.
- Scans inside encoded and archive files.
- Can be updated automatically on one or more NetWare servers and on connected workstations.
- Allows multiple scheduled jobs to be configured for automatic operation.
- Features an 'immediate mode' which allows checking on demand.
- Ensures total security by providing automatic centralised reporting of every virus incident.
- Allows messaging to users logged into the NDS tree.
- Provides an NDS tree-browser allowing easier selection from NDS of user groups that will receive virus alerts.
- Offers on-screen expert help as part of the CD on which the software is delivered.
- Supports background or priority operation.
- Protects, WANs, LANs, portables and standalones.
- Provides Sophos Anti-Virus for NetWare servers, DOS/Windows 3.1x, Windows 95/98/Me and Macintosh, all as part of a single licence.



Sophos Anti-Virus for NetWare



Technical details

Product name	Sophos Anti-Virus for Novell NetWare.
Function	Scanning individual workstations and file servers for known viruses.
Detection method	'Quick sweep' which looks for virus identities in the parts of a file that are likely to contain a virus, or 'Full sweep' which looks for virus fragments in every part of a file.
On-access scanning	InterCheck.
Mode of operation	Options are selectable by Novell-style menus.
Updates	12 per year, sent by post at the beginning of each month, or available for download via www.sophos.com .
Virus alerts	A virus message is broadcast to all members of selected NetWare user groups; users not logged in when the virus is detected are informed the next time they log in.
Security reports	A full report of the sweep can be generated.
Specification of items to be checked	Files, file types, volumes, compressed files and migrated files (files moved to another server or to other storage media).
Specification of identities	Between monthly updates, interim virus identities (.IDEs) for new in-the-wild viruses can be downloaded from www.sophos.com and placed in the server SWEEP directory; the SWEEP NLM will recognise the new IDE file after it is unloaded and reloaded. Interim identities can also be sent as faxed ASCII text.
System requirements	IBM PC and compatibles running Novell NetWare 3.2 and later.
Novell certification	Novell 'Yes, Tested and Approved' compatible.

S|O|P|H|O|S
A N T I ~ V I R U S

Sophos Plc • The Pentagon • Abingdon Science Park • Abingdon • OX14 3YP • England
Tel 01235 559933 • Fax 01235 559935

Sophos Inc • 50-S Audubon Road • Wakefield • MA 01880 • USA
Tel 781 213 3456 • Fax 781 213 5466

Sophos Pty Ltd • Level 4, 725 George Street • Sydney • NSW 2000 • Australia
Tel 02 9212 1600 • Fax 02 9212 1788

Sophos Sarl • 1 Place Victor Hugo • 92411 Courbevoie Cedex • France
Tel 01 41 99 94 20 • Fax 01 41 99 94 49

Sophos GmbH • IT-Park • Am Hahnenbusch • 55268 Nieder-Olm • Germany
Tel 06136 91193 • Fax 06136 911940

Sophos KK • YBP W Tower (11F) • 134 Godo-cho Hodogaya-ku • Yokohama 240-0005 • Japan
Tel 045 348 8400 • Fax 045 348 8989

www.sophos.com

