

Sophos Anti-Virus for OS/2

Sophos Anti-Virus for OS/2 is virus detection and disinfection software which can be installed on OS/2 file servers and workstations. It checks files on local hard disks, floppy disks and networks for the presence of viruses. It operates in scheduled and on-demand modes and provides local on-access scanning. Its unique architecture intelligently determines which files need to be virus checked, maximising user transparency and minimising performance overhead. Flexible configuration options mean that Sophos Anti-Virus can make the most efficient use of workstation and network resources.

How it works

Sophos Anti-Virus for OS/2 has two components:

- **SWEEP** provides on-demand and scheduled virus checking of files on OS/2 file servers or workstations.
- **InterCheck** provides local on-access virus checking.

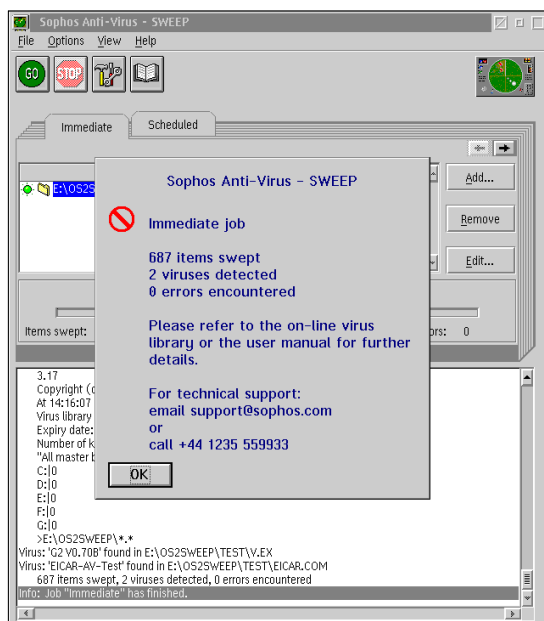
Infected files can be deleted (reversible) or shredded (irreversible).

Infected documents can be disinfected.

Infected boot sectors can be disinfected (for most viruses) or neutralised. Neutralisation is performed by modifying the boot sector in such a way as to cause the machine to hang if it is booted from the neutralised disk.

Features

- Is updated twelve times a year, and urgent interim updates can be downloaded from the Sophos website or requested to be sent by fax or email.
- Easily detects polymorphic viruses using Sophos's advanced Virus Description Language (VDL) and a built-in code emulator.
- Scans inside compressed files.
- Detects and disinfects Microsoft Word, Excel and Office 97 macro viruses.
- Offers pull-based, automatic deployment and updating of SAV from a network file server.
- Allows multiple scheduled jobs to be configured for automatic operation, even when no-one is logged in to the machine.
- Features an 'immediate mode' which allows checking on demand.
- Ensures total security by providing automatic centralised reporting of every virus incident.
- Protects WANs, LANs, portables and standalones.
- Provides Sophos Anti-Virus for OS/2 servers and workstations, DOS/Windows 3.1x, Windows 95/98/Me and Macintosh, all as part of a single licence.



Sophos Anti-Virus for OS/2 finding a virus



Technical details

Product name	Sophos Anti-Virus for OS/2.
Function	Scanning individual workstations and file servers for known viruses and providing centralised reporting for individual workstations.
Mode of operation	OS/2 process. In addition to the Graphical User Interface (GUI) version, a Command Line Interface (CLI) version with similar functionality is available.
On-access scanning	InterCheck technology provides local scanning.
Updates	12 per year, sent by post at the beginning of each month, or available for download via www.sophos.com .
Virus alerts	Sophos Anti-Virus is able to generate and print security reports. Network managers can be automatically notified by a network message to specified users or machines.
Specification of items to be checked	Individual files, recursive searching of subdirectories, individual disk subdirectories, individual disk sectors, ranges of disk sectors, ranges of bytes within disk sectors, and absolute or logical disk sector addressing.
Specification of patterns	Strings of hexadecimal digits, up to 24 bytes per pattern can be specified by the user. Patterns can be given names.
Return codes	SWEEP returns exit codes testable with the 'ON ERROR LEVEL' statement in batch or command files.
Specification of identities	Between monthly updates, interim virus identities (.IDEs) for new in-the-wild viruses can be downloaded from www.sophos.com and added into SWEEP at run-time; they can also be sent as faxed ASCII text.
System requirements	OS/2 Warp version 3 and above.
File systems supported	FAT, HPFS, JFS, CDFS.
Networks supported	Novell NetWare, IBM OS/2 LAN Server, Microsoft OS/2 LanManager.

SOPHOS

ANTI-VIRUS



Sophos Anti-Virus (SAV) has been certified by the ICSA under Windows 95, Windows NT (Alpha), Windows NT (Intel) and NetWare; however, all SAV software shares the same virus data, virus engine and monthly concordance tests.

Sophos Plc • The Pentagon • Abingdon Science Park • Abingdon • OX14 3YP • England
Tel 01235 559933 • Fax 01235 559935

Sophos Inc • 50-S Audubon Road • Wakefield • MA 01880 • USA
Tel 781 213 3456 • Fax 781 213 5466

Sophos Pty Ltd • Level 4, 725 George Street • Sydney • NSW 2000 • Australia
Tel 02 9212 1600 • Fax 02 9212 1788

Sophos Sarl • 1 Place Victor Hugo • 92411 Courbevoie Cedex • France
Tel 01 41 99 94 20 • Fax 01 41 99 94 49

Sophos GmbH • IT-Park • Am Hahnenbusch • 55268 Nieder-Olm • Germany
Tel 06136 91193 • Fax 06136 911940

Sophos KK • YBP W Tower (11F) • 134 Godo-cho Hodogaya-ku • Yokohama 240-0005 • Japan
Tel 045 348 8400 • Fax 045 348 8989

www.sophos.com