

Sophos Anti-Virus Interface (SAVI)

The Sophos Anti-Virus Interface (SAVI) allows Internet Service Providers (ISPs), Application Service Providers (ASPs) and third-party software developers to integrate their services and applications with Sophos's powerful virus detection technology. Using SAVI, they can add this virus detection capability to firewalls, email servers, encryption devices and other security-related software.

Unlike traditional command-line scanners which require repeated initialisation of their virus database and a large amount of memory, SAVI's architecture eliminates these constraints. Significant improvements in performance therefore occur.

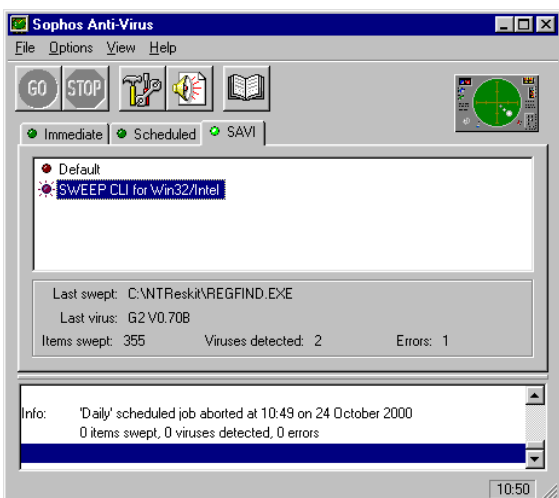
How it works

SAVI is installed as part of Sophos Anti-Virus.

A third-party application can use the SAVI Dynamic Link Library (DLL) to initialise its own copy of the Sophos Anti-Virus detection engine. Then, using SAVI, it can react instantly to individual requests to scan files. No further initialisation and no command prompts are needed.

Features

- Improves performance significantly over traditional command line virus scanners.
- Supports a disinfection interface.
- Allows ISPs, ASPs and third-party applications to access Sophos Anti-Virus's virus detection technology.
- Interfaces with firewalls, gateways and backup applications to monitor email, Internet downloads and FTP downloads.
- Uses a single, multi-threading copy of the virus detection engine to process all requests.
- Ensures transparent update of all SAVI clients when Sophos Anti-Virus is updated.
- Integrates with Sophos Anti-Virus under Windows NT, Unix and OpenVMS.
- Is updated twelve times a year with new virus identities, with urgent interim updates available.
- Is included in all corporate licences.
- Allows SAVI-only users who upgrade to a full Sophos Anti-Virus licence to pay only the difference between the SAVI licence and the full licence.



Sophos Anti-Virus for Windows NT/2000 monitoring a SAVI client application



Technical details

Product name	Sophos Anti-Virus Interface (SAVI).
Function	Virus detection interface.
Mode of operation	Dynamic Link Library (DLL) using Microsoft's Component Object Model (COM).
Using the interface	Once Sophos Anti-Virus is installed, third-party applications can call the SAVI DLL.
Updates	The licence includes 12 monthly updates on CD with interim updates available for download from www.sophos.com .
Updating SAVI clients	Clients are updated automatically and transparently when Sophos Anti-Virus is updated.
Virus alerts	Options depend on third-party product.
System requirements	Windows NT i386/AXP; Windows 2000; Unix; OpenVMS.
Memory requirement	Memory constraints are eliminated through use of a single multi-threading copy of the virus database to process all requests.

SAVI integrators

SAVI integrators include	Aker Security Solutions <i>Aker Firewall</i> Arkoon network security <i>Secure purple, Secure blue, Secure green</i> Baltimore (formerly Content Technologies) <i>MIMESweeper</i> Big Fish <i>Big Fish</i> CeQurux <i>CeQurux Firewall</i> Elron Software <i>IM Anti-Virus</i> eSoft <i>InstaGate EX</i> Fbit <i>LinuxWall</i> Group Technologies <i>securiQ.Dog for Lotus Domino</i> intY <i>intY</i> MailGate <i>MailGate</i> Marshal Software <i>MailMarshal</i> NET-TEL <i>MailGuard</i> NEXOR <i>NEXOR Defender, NEXOR Interceptor</i> Sybari <i>Antigen for Lotus Notes, Antigen for Microsoft Exchange</i>
---------------------------------	---

S|O|P|H|O|S
A N T I ~ V I R U S



Sophos Anti-Virus (SAV) has been certified by the ICSA under Windows 95, Windows NT (Alpha), Windows NT (Intel) and NetWare; however, all SAV software shares the same virus data, virus engine and monthly concordance tests.

Sophos Plc • The Pentagon • Abingdon Science Park • Abingdon • OX14 3YP • England
Tel 01235 559933 • Fax 01235 559935

Sophos Inc • 50-S Audubon Road • Wakefield • MA 01880 • USA
Tel 781 213 3456 • Fax 781 213 5466

Sophos Pty Ltd • Level 4, 725 George Street • Sydney • NSW 2000 • Australia
Tel 02 9212 1600 • Fax 02 9212 1788

Sophos Sarl • 1 Place Victor Hugo • 92411 Courbevoie Cedex • France
Tel 01 41 99 94 20 • Fax 01 41 99 94 49

Sophos GmbH • IT-Park • Am Hahnenbusch • 55268 Nieder-Olm • Germany
Tel 06136 91193 • Fax 06136 911940

Sophos KK • YBP W Tower (11F) • 134 Godo-cho Hodogaya-ku • Yokohama 240-0005 • Japan
Tel 045 348 8400 • Fax 045 348 8989

www.sophos.com